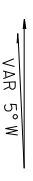
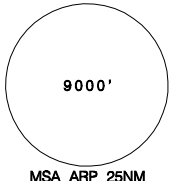
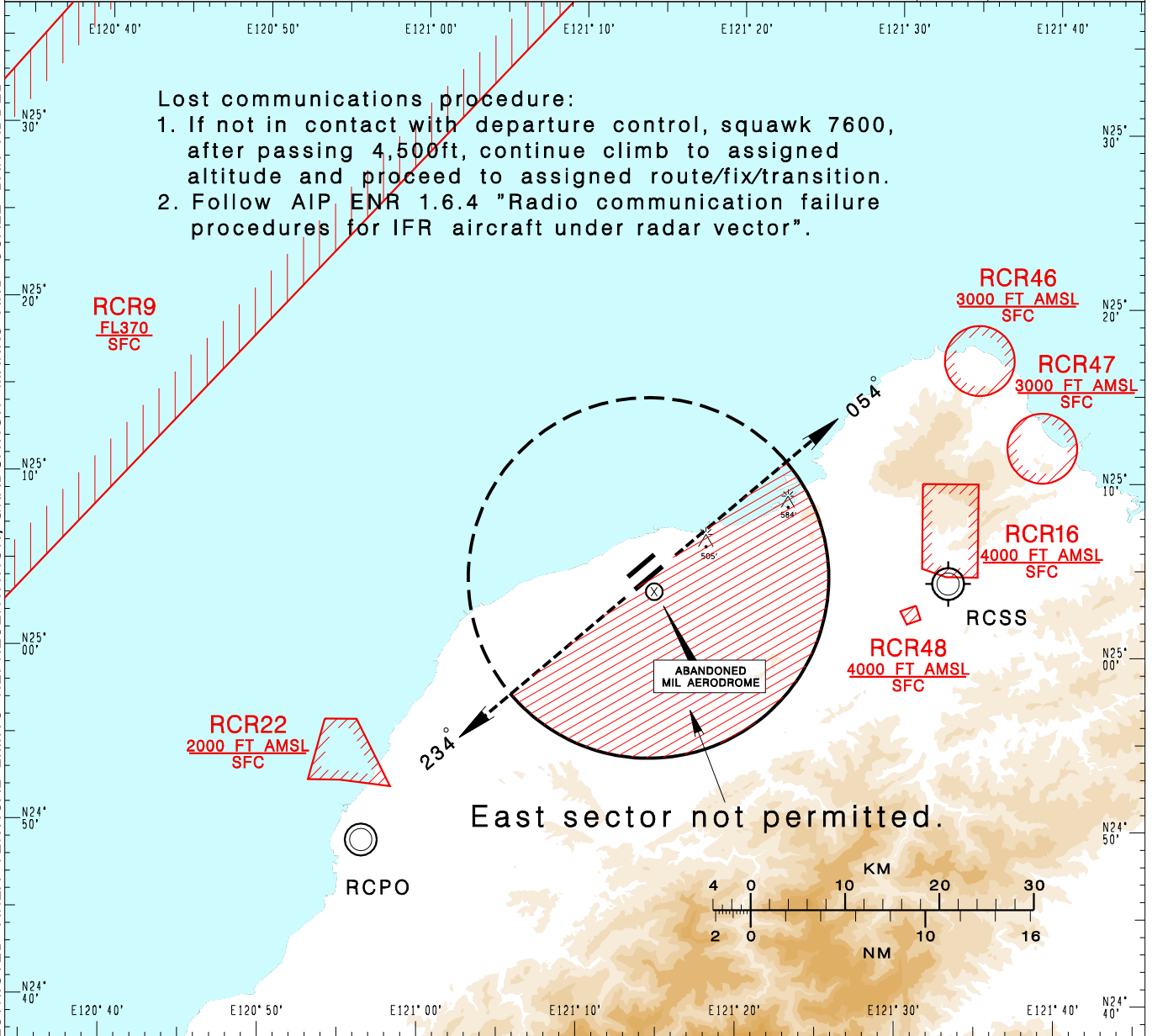


臺灣桃園國際機場
TAIPEI/TAIWAN TAOYUAN INTL AD

RCTP SID
SPRAY 1A RADAR(RWY05R) SPRAY 1C RADAR(RWY05L)
SPRAY 1B RADAR(RWY23L) SPRAY 1D RADAR(RWY23R)

TAIPEI APP 125.1 128.5	TAIPEI TWR 118.7 129.3	ATIS 127.6	 	
Apt Elev: 108'		Trans Level: FL130		Trans Alt: 11,000'
BEARINGS ARE MAGNETIC; DISTANCES ARE NAUTICAL MILES; ELEVATIONS, HEIGHTS IN FEET				

CHANGES: NEW PAGE NUMBER, UPDATE RESTRICTED AREA VERTICAL LIMITS REPRESENTATION, GRADUATION MARKS AND SCALE BAR ADDED



Lost communications procedure:
 1. If not in contact with departure control, squawk 7600, after passing 4,500ft, continue climb to assigned altitude and proceed to assigned route/fix/transition.
 2. Follow AIP ENR 1.6.4 "Radio communication failure procedures for IFR aircraft under radar vector".

SPRAY ONE ALFA RADAR DEPARTURE
Climb on RWY HDG until 700ft, then turn to assigned heading.

SPRAY ONE CHALI RADAR DEPARTURE
Climb on RWY HDG until 700ft, then turn to assigned heading.

SPRAY ONE BRAVO RADAR DEPARTURE
Climb on RWY HDG until 600ft, then turn to assigned heading.

SPRAY ONE DELTA RADAR DEPARTURE
Climb on RWY HDG until 600ft, then turn to assigned heading.

NOTE

- No turn before DER.
- East sector is not permitted.
- Minimum climb gradient required as below, if unable, advise ATC:
 RWY 05L: 5.9%(359 ft/NM) until 3000ft.
 RWY 05R: 5.6%(341 ft/NM) until 3000ft.
 RWY 23R: 5.6%(341 ft/NM) until 3000ft.
 RWY 23L: 5.7%(347 ft/NM) until 3000ft.
- Expect radar vectoring by ATC to join the cleared ATS route.
 ATC may assign headings from 054DEG counterclockwise to 234DEG.
- Available hours: 0000-0300, 0600-1000UTC daily; except HDG 054 and HDG 234 no time restriction.